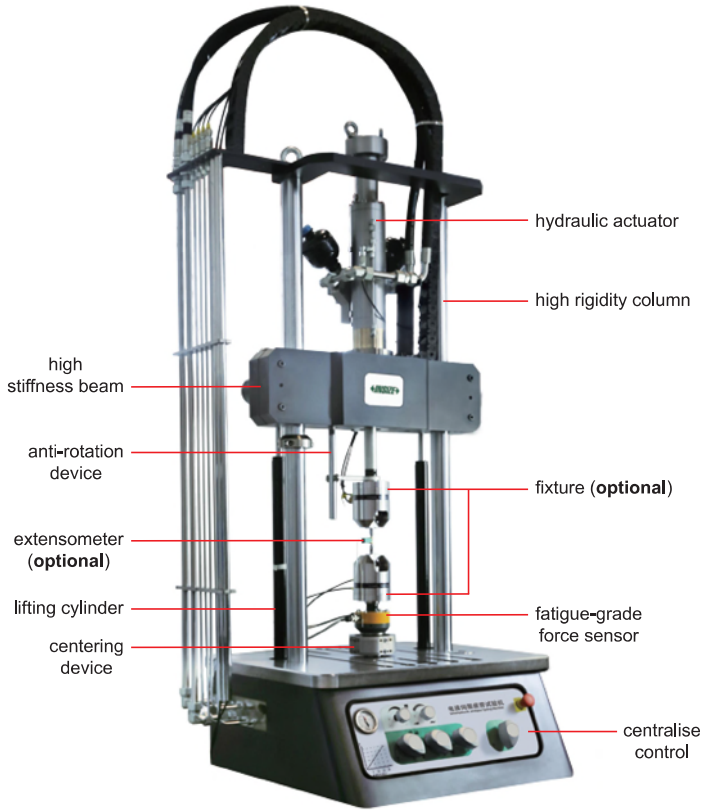
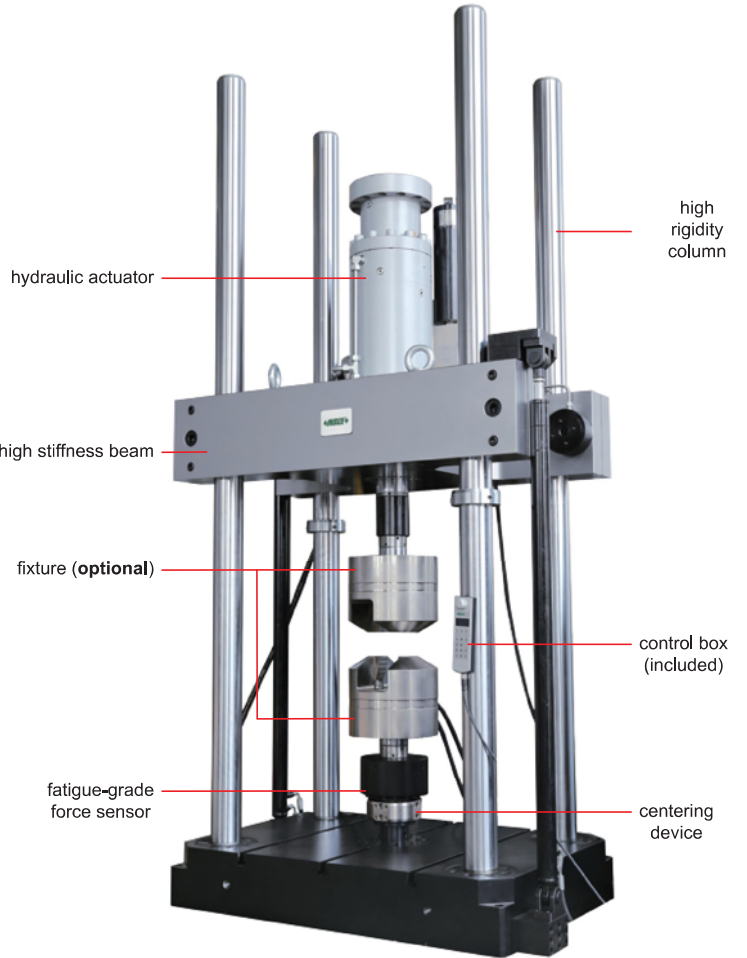


# SERVOHYDRAULIC FATIGUE TESTING MACHINES (CYLINDER UP-MOUNTED)

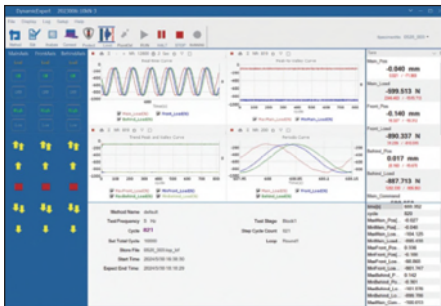
ATTENTION: CUSTOMIZED  
ACCORDING TO TEST METHOD



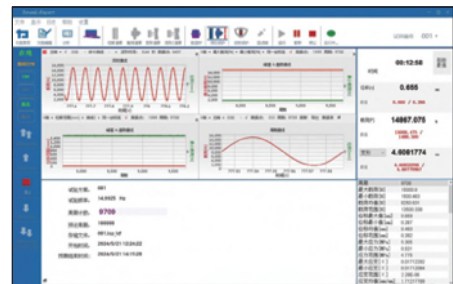
FTM-U25



FTM-U250



software (included)



software (included)

- According to ASTM D3479, ASTM D7615, GB/T 3075, HB5287, GB/T 15248, GB/T 6398, GB/T 4161, GB/T21143, ASTM 1290, ASTM-E399, JJG 556-2011
- Suitable for tensile, compression, bending, tension-tension, compression-compression, tension-compression and other mechanical properties of the test
- Suitable for fatigue testing of composite materials, steel, aluminium alloys, super alloys, etc.

## SPECIFICATION

Code	FTM-U10	FTM-U25	FTM-U50	FTM-U100
Max. test force	10kN	25kN	50kN	100kN
Accuracy of static force measurement	±0.5% of indicated value			
Accuracy of dynamic force measurement	±2% of indicated value			
Range of test force	0.5%~100%FS			
Actuator stroke*	±75mm			
Accuracy of displacement measurement	linearity error <40μm, repeatability <0.001%FS			
Range of frequency	0~100Hz			
Concentricity	≤5%			
Vertical test space*	1100mm	1100mm	1120mm	1120mm
Effective test width*	460mm	460mm	540mm	540mm
Test waveform	sine wave, square wave, triangle wave, ramp wave, random wave, spectral loading, sweep frequency, etc.			
Stiffness	1.25×10 <sup>8</sup> N/mm		5×10 <sup>8</sup> N/mm	
Dimension (W x D x H)	800×500×2500mm	800×500×2500mm	870×550×2000mm	870×550×2000mm
Weight	150kg	150kg	1100kg	1350kg
Power supply	AC 380V, 3Ø, 50Hz			

## SPECIFICATION

Code	FTM-U250	FTM-U500	FTM-U1000	FTM-U2500
Max. test force	250kN	500kN	1000kN	2500kN
Accuracy of static force measurement	±0.5% of indicated value			
Accuracy of dynamic force measurement	±2% of indicated value			
Range of test force	0.5%~100%FS			
Actuator stroke*	±75mm			
Accuracy of displacement measurement	linearity error <40μm, repeatability <0.001%FS			
Range of frequency	0~100Hz			
Concentricity	≤5%			
Vertical test space*	1235mm	2000mm	2600mm	3000mm
Effective test width*	650mm	780mm	600mm	850mm
Test waveform	sine wave, square wave, triangle wave, ramp wave, random wave, spectral loading, sweep frequency, etc.			
Stiffness	6.5×10 <sup>8</sup> N/mm	8×10 <sup>8</sup> N/mm	2.1×10 <sup>9</sup> N/mm	4.2×10 <sup>9</sup> N/mm
Dimension (W x D x H)	1000×640×3200mm	1000×640×3700mm	1100×650×5800mm	1500×850×6500mm
Weight	2050kg	6200kg	8500kg	12500kg
Power supply	AC 380V, 3Ø, 50Hz			

\*Can be customized according to test requirements

## WAVEFORM OF WORKING CONDITION

(page□□)

### STANDARD DELIVERY

Main unit	1 pc
Hydraulic oil source	1 set
Main circulating cooling water system	1 set
Control box	1 pc
Measuring software	1 set
Computer	1 pc
Printer	1 pc

### OPTIONAL ACCESSORY

Fixture	customized
Extensometer	
High-temperature extensometer	
High and low temperature test chamber	
Temperature and humidity test chamber	
High-temperature furnace	
Security door	
Video extensometer	UTM-M series